

Northeastern Cave Conservancy News



The Northeastern Cave Conservancy, Inc. (NCC) is a not-for-profit corporation committed to the conservation, study, management, and acquisition of caves and karst areas having significant geological, hydrological, biological, recreational, historical or aesthetic features. To these ends, the NCC combines the resources and expertise of affiliated cave explorers, educators, scientists, landowners, and conservation officials.

Next Board Meeting

Saturday, May 31, 2003, 4PM
Schoharie Cabin, Schoharie, NY

Next Executive Committee Meeting

April 27, 2003 at 10:00 AM at Howe Caverns

There will be a cave clean up prior to the meeting starting at 10 a.m.

Notes from the Last Meeting

- 1) The last NCC meeting was held at CT Male.
- 2) In attendance were Bob Addis, Bill Folsom, Joe Levinson, Christa Hay, Jon Allison, Craig Cantello, Vince Kappler, Ed Lucas, Paul Murphy, Tom Rider, Steve McLuckie, and Al Lehmann. Mike Chu was nominated as proxy for Mike Warner.
- 3) Porter and Addis spoke with owners of Clarksville and they turned down our first offer, they would like to keep some of the property.
- 4) Discussion of the website. Melanie Peterson has offered her assistance with the website.
- 5) Alan Traino discussed various fund raising concepts.
- 6) Significant discussion on the details of the NRO and tasks which need to be performed..
- 7) Long discussion on details of managing Clarksville, should the NCC purchase the property.
- 8) The board voted to reimburse the \$40 registration fee for someone to attend the Fundraising Training Workshop scheduled for Wednesday, August 6, 2003 at the NSS Convention. If interested in attending, contact a member of the board.
- 9) Joe Armstrong was appointed Chairman of the Conservation Committee.
- 10) The Board vote to negotiate up to \$15,000 for the purchase of Ella Armstrong Cave.

In this issue

Notes from the Last Meeting.....	Page 1
Clarksville Cave Project.....	Page 2
Website Material Needed.....	Page 3
NCC Newsletter Going Electronic	Page 3
Upcoming Trustee Elections	Page 4

Deadline for next issue – 7/31/2003

Northeastern Cave Conservancy, Inc.		
Officers		
President	Bob Addis	(518) 237-1165 raddis@capital.net
Vice President	Bill Folsom	(212) 427-7256 rockeater@mindspring.com
Treasurer	Joe Levinson	(973) 208-9049 jlevinson@tellurian.net
Secretary	Christa Hay	(518) 237-1165 c.hay@ctmale.com
Trustees		
Jon Allison		(518) 238-1594 allisj2@alum.rpi.edu
Craig Cantello		(518) 393-9608 eocaver@hotmail.com
Vince Kappler		(973) 579-2116 vkappler@nac.net
Al Lehman		(518) 234-8585 BigAl102@hotmail.com
Ed Lucas		(518) 377-6359 edlucas@juno.com
Steve McLuckie		(914) 339-3017 scagrotto@juno.com
Paul Murphy		(518) 234-4923 mortgageexp@hotmail.com
Tom Rider		(518) 393-4016 trider3@nycap.rr.com
Michael Warner		(518) 295-7978 mwarner@albany.net
Committee Chairs		
Acquisitions	Chuck Porter	(518) 274-4863 necaver@wizvax.net
Bylaws	Rane Curl	(313) 995-2678 rcurl@cyber space.org
Conservation	Joe Armstrong	gonecaving@hotmail.com
Finance & Investments	Larry Southam	(860) 774-2273 lsoutham@neca.com
Fundraising	Alan Traino	
Land Trusts Liaison	Mike Warner	(518) 295-7978 mwarner@albany.net
	Thom Engel	(518) 478-9664 caveman@acmenet.net
Legal	Dan Werner	danwern@hotmail.com
Membership	<i>Vacant</i>	
Nominating	Bob Simmons	(518) ???-???? rwsimmons1@msn.com
Office	Mike Warner	(518) 295-7978 mwarner@albany.net
	Emily Davis	(518) 295-7978 speleobooks@speleobooks.com
Preserves	Thom Engel	(518) 478-9664 necaver@earthlink.net
	Emily Davis	(518) 295-7978 speleobooks@speleobooks.com
Publications	Christa Hay	(518) 237-1165 c.hay@ctmale.com
Newsletter Editor	Tom Rider	(518) 393-4016 trider3@nycap.rr.com
Newsletter Publisher	Christa Hay	(518) 237-1165 c.hay@ctmale.com
Website	Norm Berg	(860) 621-2080 nb.website@cox.net
Publicity	Christa Hay	(518) 237-1165 c.hay@ctmale.com
Science Coordinator	R. Laurence Davis	(203) 932-7108 rldavis@charger. Newhaven.edu
<p>The Northeastern Cave Conservancy News is published quarterly by the Northeastern Cave Conservancy, Inc. The Northeastern Cave Conservancy promotes the study and preservation of speleologically significant properties in the Northeastern United States. Annual membership is \$15 (Regular), \$5 addtl. (Family), \$10 (student), \$50 (Benefactor), and \$100 (Institutional). All checks made payable and sent to:</p> <p style="text-align: center;">The Northeastern Cave Conservancy, Inc. P.O. Box 254 Schoharie, N.Y. 12157</p> <p style="text-align: center;">www.caves.org/conservancy/ncc/</p>		

Clarksville Cave Project
by Chuck Porter

March 27 was a warm sunny day and I was finally able to survey the Clarksville property and establish a proposed new boundary. Most of the snow was gone, and although I found no corner markers, several segments followed along stone walls. It was also fairly easy to see where limestone bedrock ended and glacial sands and gravels began. The present owners wish to keep the eastern part of the property -- on glacial material which can support wells and septic tanks -- for future development.

There are 14 corners on this 22.3 acre property. I determined GPS coordinates for most, then tried to locate them with a GPS receiver. There are several sources of error in doing this. For one thing, the county tax maps don't agree and I had to draw a compromise boundary between two slightly different maps. Second, there is drafting error in my determinations of these boundaries. But probably the biggest error is GPS uncertainty. During my trek through the woods, the GPS accuracy ranged between 20 and 30 feet for the 12 numbered corners. I left flagging tape where the GPS indicated I was at the calculated coordinates, but the exact point could be 30+ feet away.

I then tried to find the border between karst bedrock and glacial sediments. Realizing that we would probably need a 50-foot deeded access strip to the cave property, I put markers A and B 50 feet east of the western edge of the southern part of the property. I continued this line on to marker C, but beyond here the karst extends eastward so there are two more markers at D and E. GPS accuracy for these lettered markers was between 15 and 20 feet -- there must have been a better satellite configuration at that time.

If you'd like to check out this property, and the proposed division, then better do so soon before the leaves come out and the flagging starts to disappear. The flagging tape is red -- with numbers for original property corners, letters for the proposed division.

The attached map shows the property, proposed division, cave entrances, etc. Below are notes on the individual markers, along with GPS points. Set your receiver at NAD27, on the UTM system.

1. To the right of the ATV track heading back into the quarry just where the road goes up to the upper parking lot. If this is missing, it's 20 feet east of a monitoring well cap. (The boundary between 1 and 2 seems to be marked by several steel fence stakes along the top of the parking area)

- A 815, 094
- B 808, 174
- C 818, 289
- D 868, 308
- E 896, 345
- F = 7

2. In the pricker vines

3. By a large tree

4. Near a fence

5. At top of ledge

6. On ledge above long field. Deep grikes here!

6A. The end of the adjacent property with Thook Entrance. It would be easy to add on the tip of this property but I'll leave that until after we acquire the Wards property.

7. Just off the limestone, across a drainage channel and on glacial material.

8. By large tree

9. The corner marker here is an old car tire I moved to this location. The middle of a field is a strange place for a corner.

10 thru 12. Along fence row. I left flags out from the brush rather than along the exact stone wall.

A. By large tree just to left of trail as it enters woods from parking area

B. To right of trail

C. At 4-way trail junction, SE side

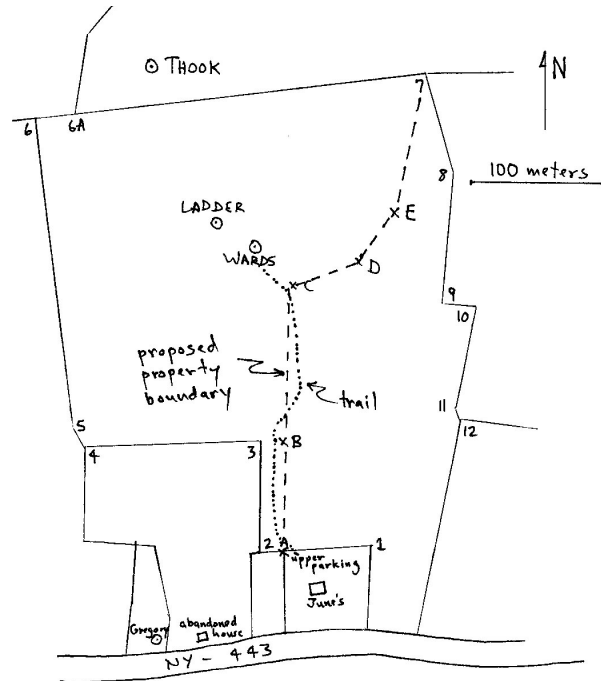
D. Just left of trail

E. High on a sapling

F = 7.

Marker: UTM East coordinate: UTM North coordinate:

- 1. 584.878 km 4714.094
- 2. 798, 087 (numbers to left of decimal are all the same on this property)
- 3. 798, 173
- 4. 667, 165
- 5. 657, 180
- 6. 627, 409
- 6A. 656, 412
- 7. 916, 446
- 8. 937, 375
- 9. 930, 278
- 10. 954, 276
- 11. 941, 201
- 12. 945, 190



Web Site Material Needed!

One of the best ways for the NCC to remain visible is for us to keep up an attractive, informative, and up to date website. Norm Berg has recently given the site a fresh look and updated everything. Check it out at <http://www.caves.org/conservancy/ncc/> If you have pictures, maps, cave descriptions or any other ideas for the website, please contact either Norm Berg (nb.website@cox.net) or Melanie Peterson (mpeterson@omm.com).

The NCC Newsletter is going Electronic

To cut down on printing and postage costs, the NCC Newsletter is going electronic. The newsletter will be emailed out as a .pdf file, for which free viewers can be downloaded at <http://www.adobe.com/products/acrobat/readstep2.html> Please email Christa Hay at c.hay@ctmale.com and give her your email address to be added to the electronic distribution.

Upcoming Trustee Elections

Yes, it's that time of year again. I'm putting together the ballot information for the upcoming election of Board members for the Northeastern Cave Conservancy. If you, or someone you know, would like to become an integral part of one of the premier cave conservation organizations in the Northeast, please send me e-mail so I can contact you for further information. Please pass this request on to our friends that do not have e-mail. I'd like to get the candidates list done in the next two weeks or so. Please send in all nominations by May 4, 2003. Thank you all.

Bob Simmons
NCC Nominating Chair
rwsimmons1@msn.com