

Crossbones Cave

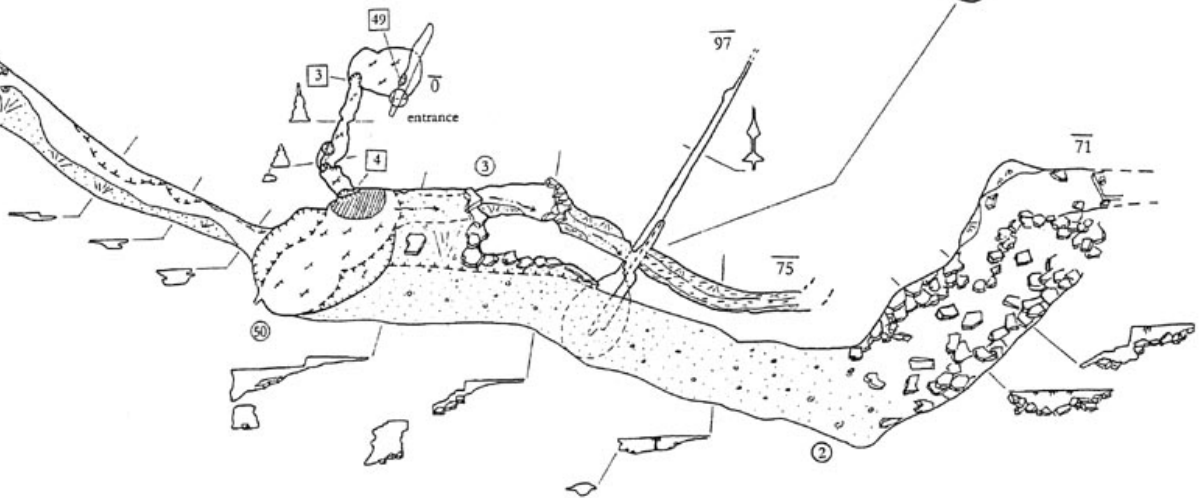
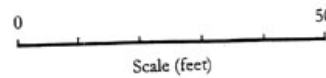
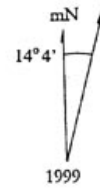
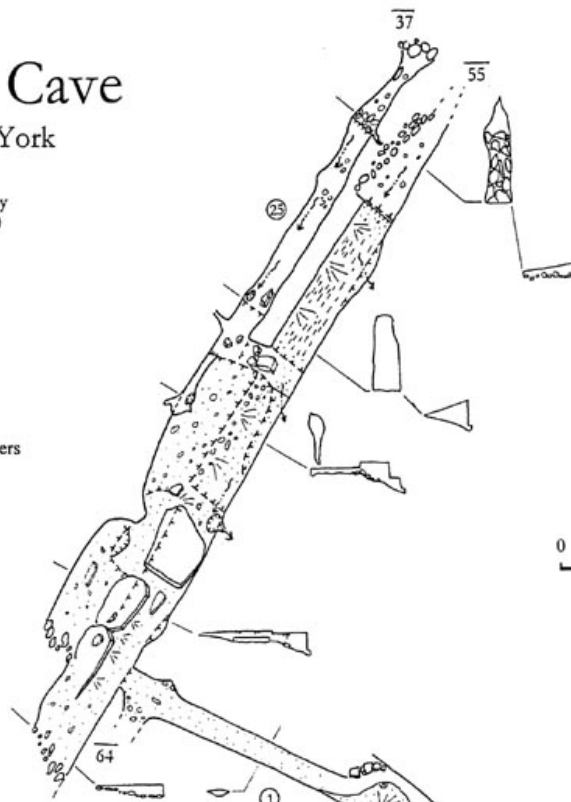
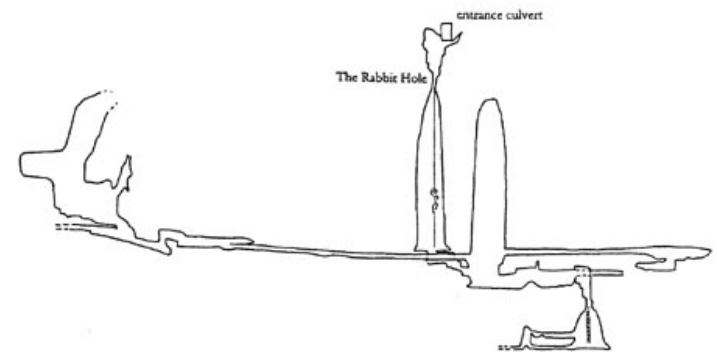
Albany Co., New York

Suunto and Tape Survey
May 1999 to May 2000

Clare Anderson
Joe Armstrong
Steve Carley
Bill Folsom
Ken Fortuin
Peter Haberland
Toinette Hartshorne

Dug open by the Rockeaters

1/2 Scale Profile as Viewed From 240°



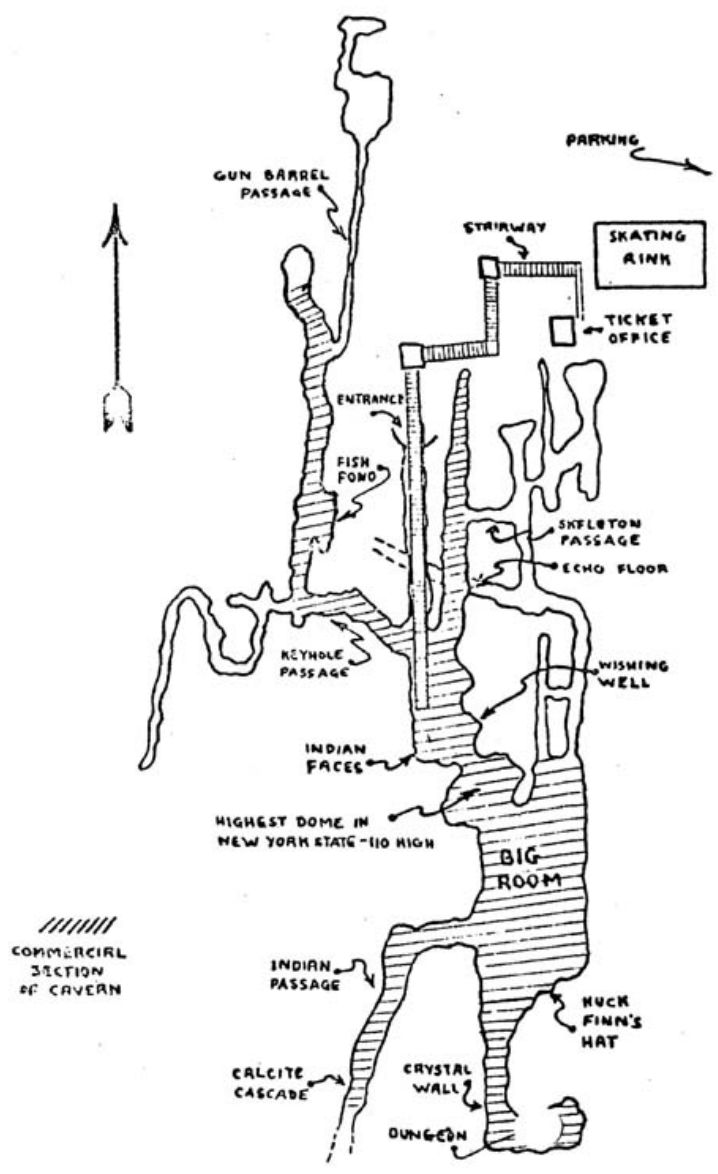
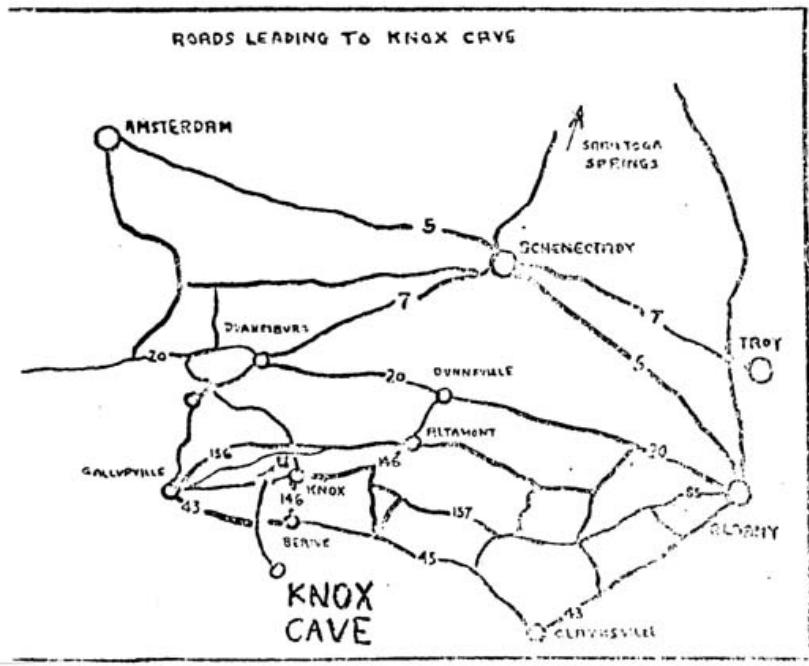
Legend

- breakdown
- cobbles
- sand and gravel
- bedrock
- sloping floor
- ledge in floor
- mud
- ceiling height
- ledge in ceiling
- unexplored lead
- pool
- intermittent water path
- underlying passage
- depth below bedrock
- datum at bottom of entrance culvert
- cross-sections to scale

SKETCH MAP OF KNOX CAVE

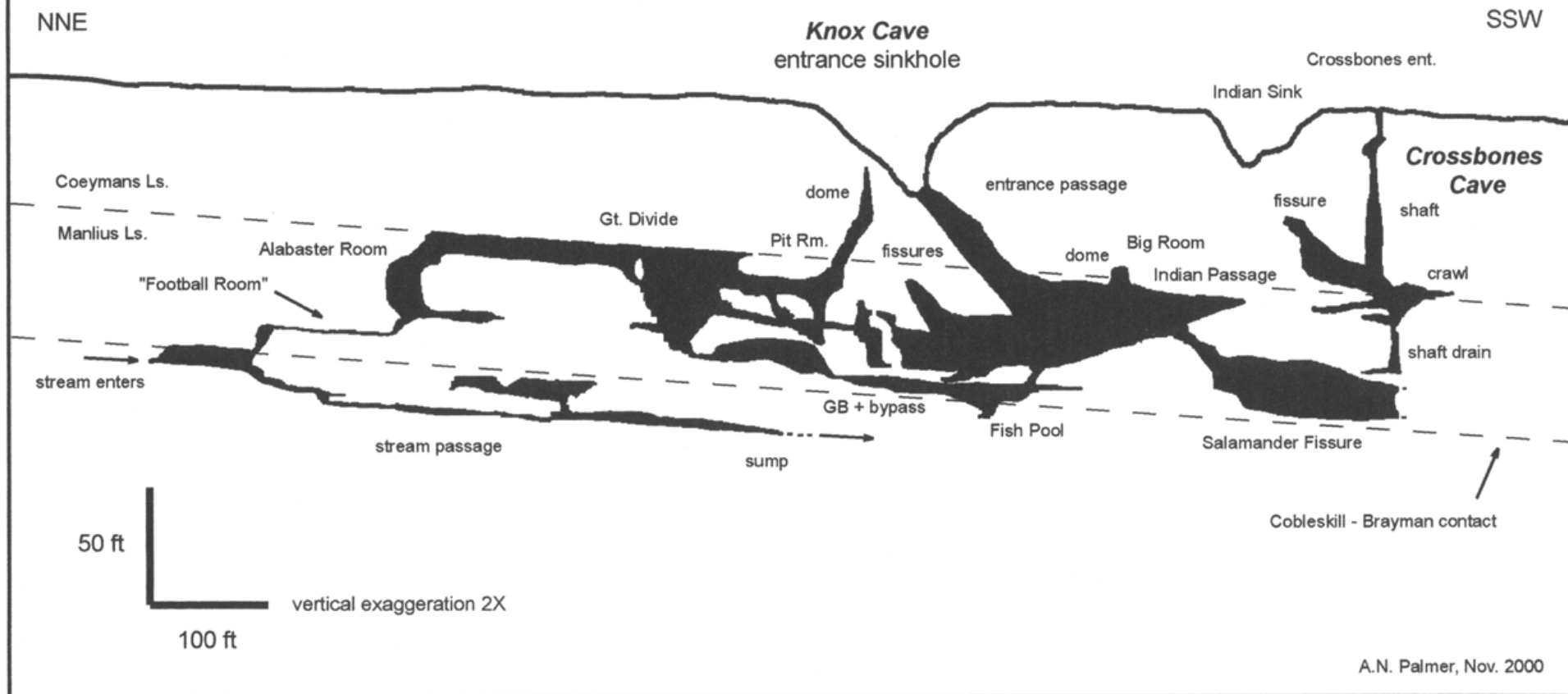
A PART OF NEW YORK'S UNDERGROUND EMPIRE

Old Commercial Map

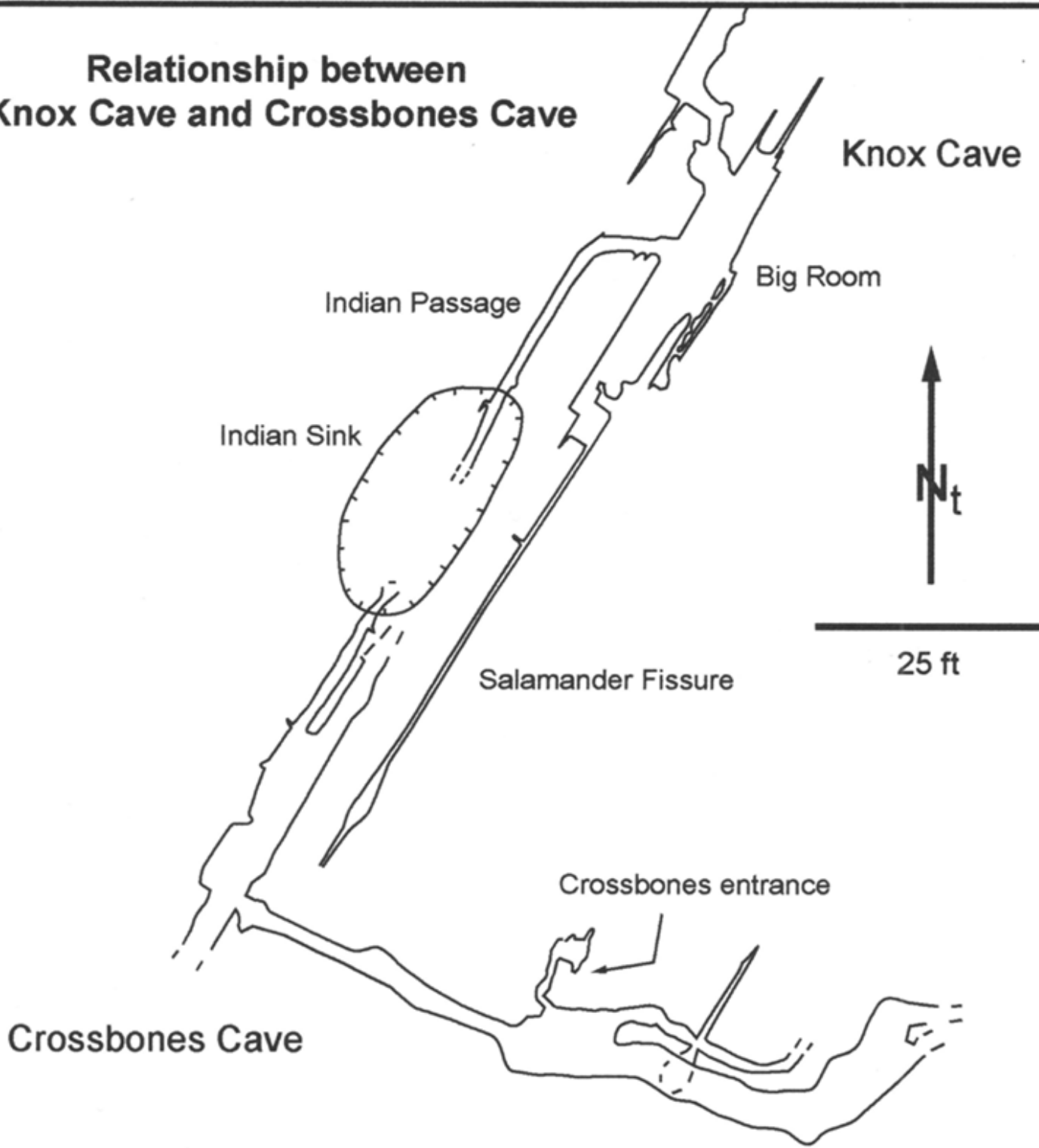


PROJECTED PROFILE THROUGH KNOX AND CROSSBONES CAVES
view looking 110° (east-southeast) with respect to true north

PRELIMINARY DRAFT



Relationship between Knox Cave and Crossbones Cave



Crossbones map generalized from detailed map by Seve Carley (*Northeastern Caver*, Sept. 2000)

